



GENERAL CONCEPTS	1
COMPONENTS AND PRESETS	1
PADKONTROL MODES	2
CONTROL OVERVIEW	2
CONTROL LAYOUT	2
GLOBAL CONTROLS	3
MT PLAYER	3
MAIN WINDOW	3
RIGHT-CLICK MENU	4
MIDI PORT CHOOSER WINDOW	4
TROUBLESHOOTING	5
SUPPORT	6

GENERAL CONCEPTS

COMPONENTS AND PRESETS

pKComponents are essentially new operating modes for the Korg padKONTROL. Each pKComponent offers different functionality such as a general-purpose control surface for Live (LCS) or a dedicated controller for Live's Drum Rack (LDR).

pKComponents are part of a larger Preset.

Presets are combinations of 1 to 4 pKComponents. You can switch between the available pKComponents in a Preset as described in the [Global Controls](#) section.

Preset

s run in [MT Player](#).

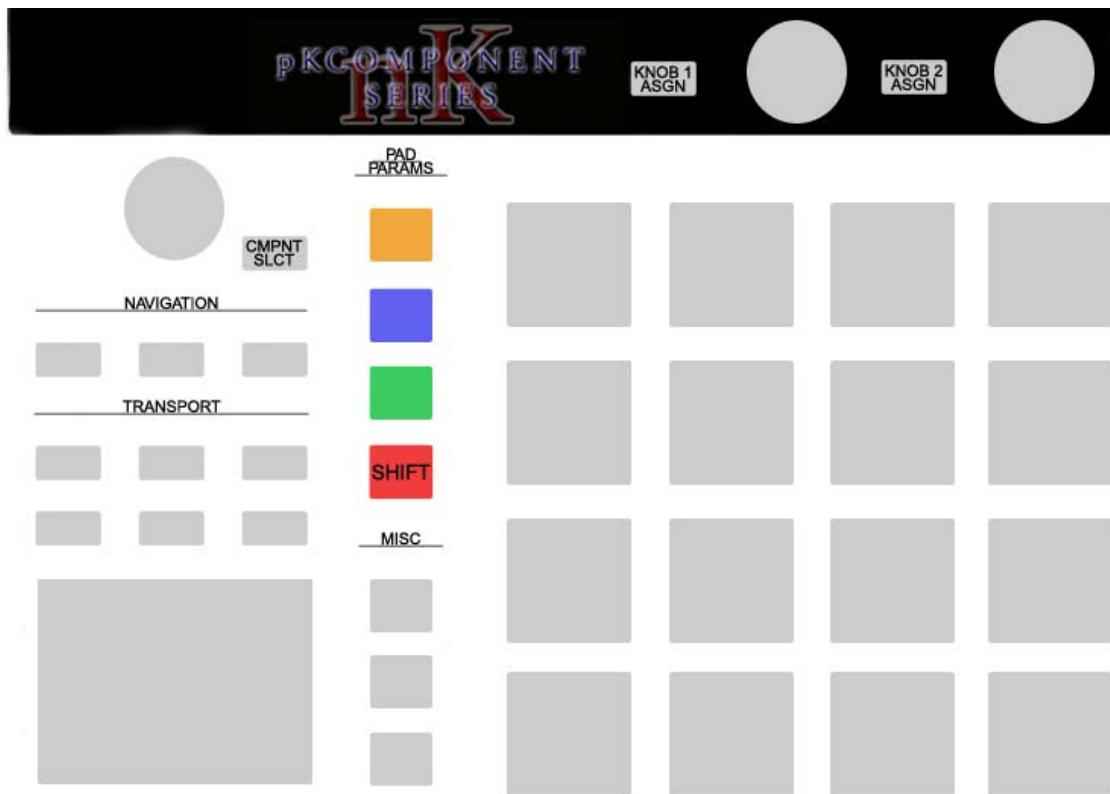
padKONTROL MODES

pKComponents utilize the padKONTROL's Native mode. Upon opening a Preset in MT Player, your padKONTROL will be booted into Native mode. However, while a Preset is running, you can switch back and forth between Play (normal) mode and Native mode at any time.

SETTING+SCENE = Exit Native mode.

MESSAGE+PAD 3 = Re-enter Native mode.

CONTROL OVERVIEW



CONTROL LAYOUT

All of the pKComponents conform to the same control layout to enhance ease of use.

The 3 Buttons underneath **NAVIGATION** are always used for navigation. Either for moving around in the application you're controlling or for moving between banks/octaves.

The 3 Buttons underneath **PAD PARAMS** are always used for adjusting parameters that pertain to the function of the Pads.

The 6 Buttons underneath **TRANSPORT** are always used for transport control.

The 3 Buttons underneath **MISC** are used for miscellaneous purposes, but are usually used for functions that pertain to the X/Y Pad.

GLOBAL CONTROLS

The following functions are Global (the same in every pKComponent).

SHIFT – This shifts the function of the other controls in the same way that shift on your computer keyboard shifts the function of other keys. Shifted functions are shown in **Red** in this manual and on all pKComponent maps.

CMPNT SLCT – Press this Button down to see the currently selected pKComponent. Hold this Button down and use the Encoder to switch between the available pKComponents in the current Preset.

KNOB 1/2 ASGN – These Buttons are always used to assign functions to Knobs 1/2.

MT PLAYER



MAIN WINDOW

The drop-down menu in the center of the window is used for selecting Presets (if multiple Presets are available). The last selected Preset will be selected the next time you launch Player.

The **Restart** button will restart a Preset and restore all of its default settings.

The **?** button will bring up the manual for the selected Preset.

The **IN** and **OUT** indicators will light up to indicate MIDI activity. These are used for troubleshooting purposes.

RIGHT-CLICK MENU

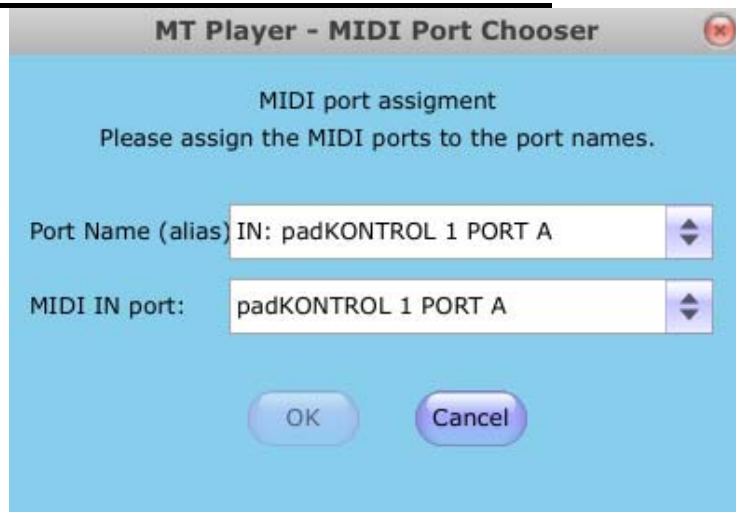
MIDI Settings...
Rescan MIDI devices
Toggle Stats Display

MIDI Settings will bring up the MIDI Port Chooser window.

Rescan MIDI devices will rescan MIDI devices on your system. This is useful in situations where your padKONTROL is not detected properly.

Toggle Stats Display will show/hide event history. This is used for troubleshooting purposes.

MIDI PORT CHOOSER WINDOW



MIDI settings are stored within Presets themselves. However, if a Preset isn't working properly, you can verify the settings here.

1. From the Port Name menu, select “IN: padKONTROL 1 PORT A”.
2. From the MIDI In port menu, select your padKONTROL’s PORT A and click OK.
3. Go back into MIDI Settings.
4. From the Port Name menu, select “OUT: padKONTROL 1 CTRL”.
5. From the MIDI Out port menu, select your padKONTROL’s CTRL PORT and click OK.

6. Click the Restart button.

TROUBLESHOOTING

1. When I try to complete the MT Player Settings steps, I do not see an option for a padKONTROL PORT A or CTRL PORT.

There are several potential causes for this:

1. The padKONTROL's driver isn't installed.

The pKC Series is setup to work with the padKONTROL's driver. It will not work properly with the standard driver that gets installed when you initially connect the padKONTROL to your machine.

If you haven't already done so, you will need to download and install the driver from Korg.com (unless you have the padKONTROL connected to a MIDI interface as described below).

For Windows users, if you've already installed the driver and you're still not seeing padKONTROL PORT A or the CTRL PORT, you may have too many MIDI devices installed on your system. You can check this by using a utility that is included with the driver you downloaded from Korg.

First, uninstall MT Player and then go to Start – Korg – Korg USB-MIDI Driver Tools – Uninstall Korg USB-MIDI Device. That will generate a list of all the MIDI devices on your system. If you see 9 or more listings there, you'll need to remove a few of those and then reinstall the padKONTROL's driver.

2. OS X only: You're using an older version of the driver.

In this case, you'll use Port 2 in place of both Port A and the CTRL port.

3. You have the padKONTROL connected to a MIDI interface.

In this case, you'll need to connect the padKONTROL's MIDI In and Out to your interface. You'll use the port you have the padKONTROL's output connected to in place of Port A. You'll use the port you have the padKONTROL's input connected to in place of the CTRL port.

2. I've gone through all the settings instructions and troubleshooting steps, but my padKONTROL won't go into Native mode.

The pKC Series is set up to communicate with the padKONTROL on Global Channel 1, which is the default setting from the factory. Please check that your padKONTROL is set to Global Channel 1 by using the padKONTROL Editor Librarian. Go to MIDI – Edit Global Data. Change MIDI CH to 1 and click Transmit to send this to your padKONTROL.

SUPPORT

Email:

support@nativekontrol.com

Forum:

[Beatwise Network](#)

Videos:

[Stray's YouTube Channel](#)